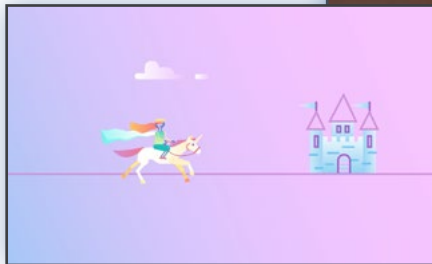


Extreme long/wide shot

The terms **long shot** and **wide shot** are used interchangeably.

Shows the full body in relation to the character's surroundings. Used to contextualise the character within their surroundings.

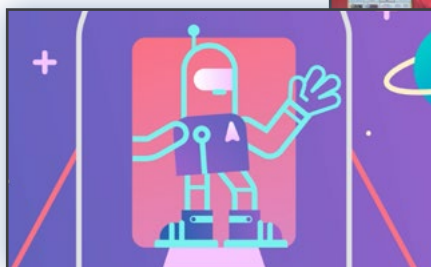
Also known as an **establishing shot** when used at the start of a film or scene.



Youth-made film *A Wondrous Fat Marriage* © Into Film (2018) All rights reserved.

Long shot

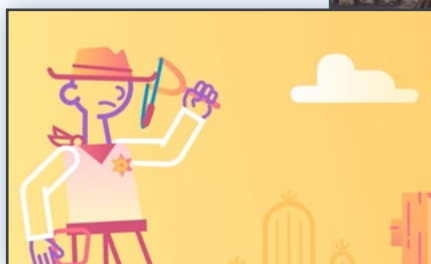
Shows the full length of the body from the feet to the top of head. Used to show a character in relation to their surroundings.



Youth-made film *Ennill Ysgol* © Into Film (2019) All rights reserved.

Medium long shot

Shows the body from mid thigh to the top of the head. Used for facial expression and showing the character in relation to their surroundings.



Youth-made-film *What Would You Do?* © Into Film (2022) All rights reserved.

Mid shot

Shows the character from the waist to the top of the head. Used for facial expressions in combination with body language.



Youth-made-film *The Best Way to Play Discus* © Into Film (2019) All rights reserved.

Close-up

Shows the character from the shoulders to the top of the head. Used for capturing character's facial expressions.



Youth-made-film *A Wondrous Fat Marriage* © Into Film (2018) All rights reserved.

Extreme close-up

Where an object, item or body part fills the film frame. Used for heightening emotion.



Youth-made-film *The Art of Parkinson's* © Into Film (2019) All rights reserved.