

## Artsmark and the Into Film programme for schools



Supporting cultural education, endorsed by Arts Council England



Artsmark  
Partner

INTO  
FILM

# ARTSMARK AND THE INTO FILM PROGRAMME FOR SCHOOLS

## INTRODUCTION

Into Film is a registered Artsmark Partner Organisation endorsed by Arts Council England, we aim to support schools in achieving their Artsmark Award accreditation. Artsmark is a nationally recognised quality standard for schools which helps to develop, celebrate and strengthen high quality arts and cultural provision in education settings.

The following document illustrates how the Into Film Programme can ensure high quality, authentic arts activity within your school whilst supporting you on your Artsmark journey.

Artsmark schools are awarded their accreditation by Arts Council England based on the following 8 criteria: leadership, curriculum design, continued professional development (CPD), children and young people engagement, range of offer, partnerships, equality and diversity, values and ethos. We have mapped each of our programme activities against the Artsmark criteria to ensure that your Artsmark journey is a success.

## ARTSMARK 8 CRITERIA

1. Leadership
2. Curriculum design
3. Continued professional development (CPD)
4. Children and young people engagement
5. Range of offer
6. Partnerships
7. Equality and diversity
8. Values and ethos





### ABOUT INTO FILM

Into Film is an education charity that puts film at the heart of children and young people's educational, cultural and personal development.

Over half of UK schools engage with our programme of Into Film Clubs, special cinema screenings, and resources and training to support classroom teaching. Alongside rich online content for young audiences, this provides 5-19 year olds with inspiring opportunities to learn about and with film, and develop a passion for cinema.

Into Film's work is supported principally by the BFI through the National Lottery, and by the film industry through Cinema First.



# INTO FILM CLUBS

## How can film be developed in your school using Into Film Clubs?

Into Film Clubs are a fun and valuable way to engage young people with and through film. Free for all state-funded schools and easy to set up, you'll gain access to an online DVD catalogue, a range of resources and exclusive invitations to screenings and events.

For more information visit [www.intofilm.org/clubs](http://www.intofilm.org/clubs)

## What impact can an Into Film Club have on your school?

Into Film Clubs have a significant and positive impact on young people's learning, in particular literacy, communication and social skills, as well as being fun for all! Evidence also suggests that Into Film Clubs hugely benefit young people with Special Educational/Additional Support Needs (SEND/ASN).

The inclusive nature of Into Film Clubs can lead to greater social cohesion, confidence and attainment for club members, whilst partaking in filmmaking activities can be a great way to engage young people in creative learning, whilst developing teamwork, leadership and communication skills.

## How can Into Film Clubs help you achieve your Artsmark Award?

### Curriculum Design

Artsmark Schools promote a broad and balanced curriculum.

Allow young people to watch, critique, review, and make films by setting up an Into Film Club. Central to the offer is our curated catalogue of over 3,000 films containing a rich variety of titles and genres including British, documentary, foreign language, shorts and archive film.

The Into Film Clubs programme will support teachers to show progression of knowledge, skills and understanding by providing specialist film screenings for both KS1 to KS5 students, and access to curriculum linked teaching sequences with a focus on creative learning techniques that teachers can embed into their future classroom practice.

Into Film Clubs support curriculum design by providing resources and ideas for using film as a stimulus for learning across the curriculum. They also encourage teachers to develop these ideas further and offer space for teachers to identify their own opportunities for differentiation and extension.

### CPD

Artsmark Schools provide evidence of a clear commitment to giving teachers CPD in the arts.

Into Film Club programme provides continued professional development in staging film screenings, and in filmmaking techniques, which can also be used across the curriculum and within film club sessions. Courses can be taken by individual educators or whole school CPD can be booked.

### Children and Young People Engagement

All children and young people in Artsmark schools can demonstrate their knowledge, skills and understanding of high quality cultural provision in their settings.

Into Film Club programme puts children at the centre, ensuring they feel ownership of the film club's process and that every pupil has the opportunity to contribute to a film screening and filmmaking project.

### Range of Offer

Artsmark schools demonstrate a diverse offer of high quality arts experiences within and beyond the normal teaching hours.

Into Film Club allows young people and educators the opportunity to explore a vast range of activities, topics and themes – filmmaking, film viewing and review writing, all connecting to curriculum themes and topics. Into Film gives young people the opportunity of national profile through the Into Film Awards and regular competitions including Review of the Week and Film of the Month.

### Partnerships

Artsmark Schools demonstrate that they understand the value of working with arts partners to provide and deliver high quality arts education.

Into Film Clubs programme provides support to both teachers and young people to deliver high quality arts activity in schools. Schools can access year-round online tools to support them in the facilitation of film watching, enabling them to access the expertise of an arts partner in a way that is flexible and convenient to them.

Teachers are encouraged to build relationships with teachers in other schools through CPD training, leadership networks and ambassador schemes. Schools are encouraged to share and celebrate their involvement in the programme with other schools in their locality and online. As well as being encouraged to enter the annual Into Film Awards where Into Film clubs across the UK are celebrated for their quality.



## Equality and Diversity

Artsmark schools demonstrate a commitment to equality of education and opportunity in the arts.

The Into Film programme offers curated film journeys which explore themes such as gender, identity and friendship to give young people a greater understanding of the world in a safe creative space. This contributes towards Spiritual, Moral, Social and Cultural (SMSC) learning.

Into Film Clubs offer several resources which have been piloted with a range of SEND/ASN settings to ensure that they are inclusive and flexible to the needs of all schools.

## Values and Ethos

Artsmark schools actively promote a life-long love for learning and enjoyment of the arts. Artsmark schools should be actively working towards Arts Award.

Into Film have mapped the film club experience alongside Discover, Explore and Bronze Arts Award and young people engaged with their film club activity can follow a bespoke journey to ensure all children and young people taking part can achieve accreditation.

More information: [www.intofilm.org/resources/1133](http://www.intofilm.org/resources/1133)



# INTO FILM FESTIVAL

## How can film be developed in your school using the Into Film Festival?

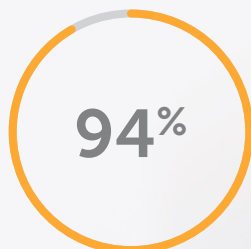
The Into Film Festival helps educators bring learning to life for 5-19 year olds across the UK by inspiring young people to watch, understand and make film in new and creative ways. It is a great opportunity to give children and young people an active and exciting introduction to film; with three weeks of UK wide screenings in cinema and non-cinema venues and a range of special events which feature talks and workshops with industry professionals.

The Into Film Festival makes a trip to the cinema easy to organise, with a curriculum-focused programme, complementary resources and free tickets for all educators and young people.

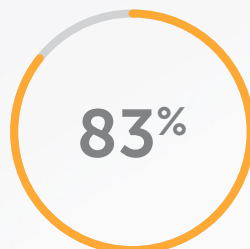
For more information visit [www.intofilm.org/events/festival](http://www.intofilm.org/events/festival)

## What impact can the Into Film Festival have on your school?

Educators actively and directly feed into the development of the festival programme

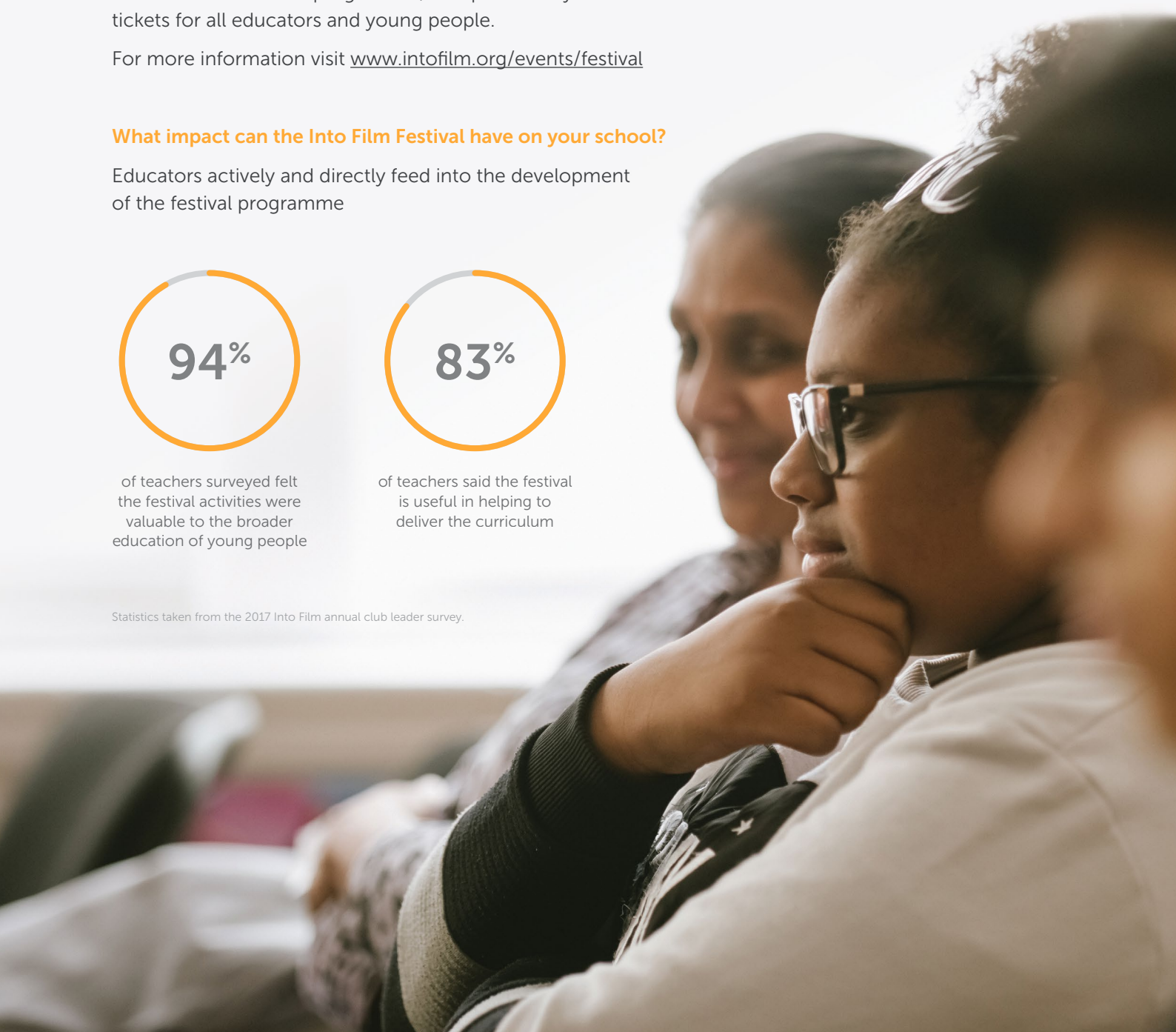


of teachers surveyed felt the festival activities were valuable to the broader education of young people



of teachers said the festival is useful in helping to deliver the curriculum

Statistics taken from the 2017 Into Film annual club leader survey.



## How can the Into Film Festival help you achieve your Artsmark Award?

### Curriculum Design

Artsmark Schools promote a broad and balanced curriculum.

All films screened at the Into Film Festival are connected and aligned with curriculum subjects, topics and themes – curricular resources, workshops and talks by industry professionals are also available to further explore these subjects.

### CPD

Artsmark Schools provide evidence of a clear commitment to giving teachers CPD in the arts.

Into Film runs a continual training programme for educators which focuses on a variety of subjects, from filmmaking, to raising literacy attainment through film, to wellbeing and careers. All Into Film training supports educators when connecting Into Film Festival screenings to the curriculum and adds extra quality and depth to their film club sessions.

### Children and Young People Engagement

All children and young people in Artsmark schools can demonstrate their knowledge, skills and understanding of high quality cultural provision in their settings.

Into Film offers workshops, talks and Q&As for children and young people to engage with during the Into Film Festival. Young people can also review each film they have seen, increasing their literacy skills. Reviews are entered into a Review of the Week competition where several reviews by young people are rewarded each week. Each winning review is shared on the Into Film website and across the social channels.

### Range of Offer

Artsmark schools demonstrate a diverse offer of high quality arts experiences within and beyond the normal teaching hours.

The Into Film Festival ensures that films, workshops, Q&As and more take place in every part of the country. This ensures children and young people have the opportunity to experience arts and culture in their locality as well as providing follow up resources and films to be screened back in their educational settings.



### Partnerships

Artsmark Schools demonstrate that they understand the value of working with arts partners to provide and deliver high quality arts education.

Into Film works with cultural partners across England to ensure that the screenings, workshops and talks provided at the Into Film Festival are delivered in partnership with a variety of local, national and international partners.

### Equality and Diversity

Artsmark schools demonstrate a commitment to equality of education and opportunity in the arts.

The Into Film Festival events are all wheelchair accessible, many in the festival are autism friendly and Into Film has a series of resources which are designed to support students with SEND/ASN.

### Values and Ethos

Artsmark schools actively promote a life-long love for learning and enjoyment of the arts. Artsmark schools should be actively working towards Arts Award.

The Into Film Festival includes a large number of talks with industry professionals and experts across England. These events are supported by a host of online resources and videos which promote the career routes and experience of working in the film and creative industries.



# INTO FILM RESOURCES

## How can film be developed in your school using Into Film resources?

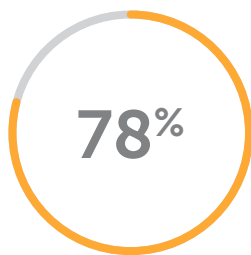
Into Film curate and produce educational resources from film guides to activity sheets, and curriculum-linked resources – these are free to access for anyone engaging in the programme.

For more information [www.intofilm.org/resources](http://www.intofilm.org/resources)

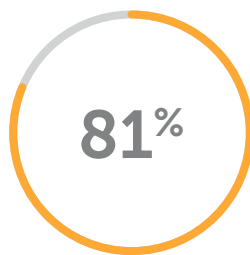
## What impact can Into Film resources have on your school?

Realise the extraordinary potential of film to engage young people in complex issues and curriculum areas and encourage effective learning with our educational resources. They range from film discussion guides to curriculum-linked resources and assemblies with accompanying PowerPoint presentations that include embedded film clips.

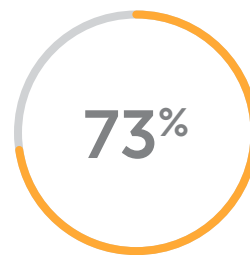
Teachers using Into Film resources have seen an increase of:



Speaking and listening skills



Imagination and creativity skills



Literacy skills or attainment.

Statistics taken from the 2017 Into Film annual club leader survey.

## How can Into Film resources help your school achieve an Artsmark Award?

### Curriculum Design

Artsmark Schools promote a broad and balanced curriculum.

Into Film offer resources which cover all curriculum areas across all Key Stages. Resources connect film into subjects as varied as English, Science and PSHE Education in addition to pastoral concerns such as online safety and anti-bullying – using film as a catalyst to enhance and bring those subjects alive. Resources are free to download and include student-facing PowerPoint presentations, teachers' notes and activity sheets.

### CPD

Artsmark Schools provide evidence of a clear commitment to giving teachers CPD in the arts.

All CPD and training provided by Into Film is supported by effective resources. These have been developed in consultation with educators across the UK and are sent to CPD session participants after completing a face-to-face training session.

### Children and Young People Engagement

All children and young people in Artsmark schools can demonstrate their knowledge, skills and understanding of high quality cultural provision in their settings.

Into Film resources enable young people to express themselves and to improve their literacy and understanding of film as an art form. Young people in Artsmark schools can demonstrate their knowledge, skills and understanding of high quality cultural provision in their settings.

### Range of Offer

Artsmark schools demonstrate a diverse offer of high quality arts experiences within and beyond the normal teaching hours.

Into Film resources connect to a variety of art and cultural forms, exploring the importance of drama, art, music and design within film.

### Partnerships

Artsmark Schools demonstrate that they understand the value of working with arts partners to provide and deliver high quality arts education.

Into Film resources are developed and brought together by Into Film in partnership with several cultural, creative and academic partners across the nations and regions.

### Equality and Diversity

Artsmark schools demonstrate a commitment to equality of education and opportunity in the arts.

Into Film resources are offered by Into Film are developed to ensure they can reach young people of all ages, abilities, cultures and faith. They have a strong focus on SEND/ ASN and have been designed to enable Artsmark schools to have an understanding and commitment to equality of opportunity to arts and culture experiences.

### Values and Ethos

Artsmark schools actively promote a life-long love for learning and enjoyment of the arts. Artsmark schools should be actively working towards Arts Award.

All Into Film resources support continued professional development for educators. Our Arts Award mapping documents can also support educators who wish to put their young people through Arts Award at Discover, Explore and Bronze level.



# INTO FILM TRAINING

## How can film be developed in your school using Into Film training?

Into Film training enables schools and educators to enrich their teaching. Into Film offers a variety of training opportunities.

- Whole school insets, open public training, twilight sessions and online training courses
- Participants will develop a range of skills that are transferable between film and literary texts
- Filmmaking has the power not only to increase educational attainment for pupils across the curriculum but also to empower teachers with an exciting new means of assessing learning

For more information visit [www.intofilm.org/training](http://www.intofilm.org/training)

## What impact can Into Film training have on your school?

Into Film's training will provide educators with the skills to teach film in the classroom, bringing to life curriculum subjects. Alongside the training, Into Film also provides high quality resources to help teachers take the skills learnt during training back into the classroom and film club setting.

## How can Into Film Training help you achieve your Artsmark Award?

### Curriculum Design

Artsmark Schools promote a broad and balanced curriculum.

Into Film CPD training supports the curriculum by providing free effective resources. The resources cover subjects, topics and themes throughout all Key Stages.

### CPD

Artsmark Schools provide evidence of a clear commitment to giving teachers CPD in the arts.

Into Film offers a variety of ways in which educators can access training. This can be done through whole school inset, open public training and online training.

### Range of Offer

Artsmark schools demonstrate a diverse offer of high quality arts experiences within and beyond the normal teaching hours.

The Into Film programme demonstrates the benefits of using film as text to develop young people's critical thinking, analytical and contextualisation skills across the curriculum.

### Partnerships

Artsmark Schools demonstrate that they understand the value of working with arts partners to provide and deliver high quality arts education.

The Into Film CPD programme offers a wide range of tools, skills and techniques which can then be transferred into the classroom as an excellent teaching tool to enhance delivery of subjects.

### Equality and Diversity

Artsmark schools demonstrate a commitment to equality of education and opportunity in the arts.

Filmmaking has the power not only to increase educational attainment for pupils across the curriculum but also to empower teachers with an exciting new means of assessing learning.

### Values and Ethos

Artsmark schools actively promote a life-long love for learning and enjoyment of the arts.

Into Film CPD celebrates the intrinsic values of film as an art form, whilst guiding young people towards essential employability skills and career routes.



